

## MS 211

## STIHL MS 211 Mini Boss® Chainsaw



Low-vibration compact chainsaw. Extensive features such as long-life air filter system and STIHL anti-vibration system. High cutting performance and user comfort. Idea for cutting firewood and for felling small trees.

## Product

Petrol Chainsaw - MS 211 - 40cm/16"  
MiniBoss

## RRP

**\$649.00**  
(incl. GST)



## Technical Details

Displacement cc	35.2
Performance kW	1.7
Weight kg <sup>1)</sup>	4.3
Power-to-weight Ratio kg/kW	2.5
Sound pressure level dB(A) <sup>2)</sup>	100
Sound power level dB(A) <sup>2)</sup>	113
STIHL Oilomatic saw chain pitch/type	3/8 " P
Standard chain	PICCO MINI 61 PMN
Tank volume mL	270.00

<sup>1)</sup> Without fuel, without bar and chain

<sup>2)</sup> K-factor according to DIR 2006/42/EC = 2.5 dB (A)

## Features

## Standard

## Pre-separation air filtration system

The innovative long-life air filter system greatly extends the service life of the filter. Air routing removes larger particles of dirt, meaning the actual filter has less to do. So the saw can be used for longer without having to clean the filter.

## Advanced combustion technology

Four overflow channels swirl the fuel-air mix before ignition, allowing for optimum combustion and highly efficient performance. The result: lower consumption and high torque across a broad rpm range.

## STIHL anti-vibration system

Intense vibration at the handles of power tools can lead to longer-term effects of blood vessels in the hands and arms. STIHL have therefore developed an effective anti-vibration system where by the oscillations from the machines engine are dampened which significantly reduces vibrations at the handles.

## Compensator

This controller in the carburettor prevents the fuel-air mixture getting richer as the air filter becomes clogged. The correct quantity of fuel is delivered to the carburettor depending on the quantity of air passing through the air filter. This keeps the fuel/air ratio in the combustion mixture constant and hence also the engine power. The filter doesn't need to be cleaned until an appreciable drop in power occurs.

## QuickStop Chain Brake

The QuickStop chain brake is a protective mechanism when handling chainsaws. The chain brake is operated via the front hand guard and brings the saw chain to

## PLEASE NOTE: Reserving STIHL Products

These products can be reserved online with no obligation and picked up at your local STIHL Dealer. As your satisfaction is of particular importance to us, we provide you with extensive in-store personal instruction including safe handling plus professional advice and service to ensure you get the most out of your STIHL purchase. \* Sale price and availability may vary from store to store.

a standstill in fractions of a second. If the kickback is strong enough, the Quick Stop Chain Brake automatically releases.

---

#### Single-lever master control

All important functions such as start, choke, throttle and stop are operated via a single lever.

---

#### Side-mounted chain tensioning

The tensioning screw is located on the side of the chain saw through the sprocket cover. Chain side tensioning allows the saw chain to be retensioned effortlessly, avoiding any contact with the sharp chain.

---

#### STIHL Ematic-System

The Ematic chain lubrication system ensures pinpoint lubrication of the saw chain links and guide bar rails. When used with STIHL OILOMATIC saw chain, it will provide maximum lubrication, longer wear and less oil consumption than conventional methods of chain lubrication. The Ematic system can reduce bar oil consumption up to 50%.

---

#### Tool free fuel caps

Special caps on the fuel and oil tanks are designed for easy opening and locking without the need for tools.

---

### Accessories



#### Chainsaw Case - Woodsman

Made of durable plastic. For safe storage and transportation of petrol and electric chain saw models: MS 170, 171, 181, 201 T, 192 C-E, 211, 230, 231, 251, 240 C-M, 250, 261, 362, MSE 140, 180, (not MSE-C versions). Not suitable for MS 441.

**\$100.00**

[Contact Us for Price and Availability](#)

---



#### Stump Vice - S 260 - Small

Large and robust design. Can be easily driven into the wood.

**\$40.00**

[Contact Us for Price and Availability](#)

---



#### Service Kit - MS 171 / MS 181 / MS 211

Extend the working life of your product with STIHL convenient self-service kits. Inclusive of air filter, fuel filter and spark plug. Suitable for: MS 171 / MS 181 / MS 211

**\$35.00**

[Contact Us for Price and Availability](#)

---



#### **Oil - Chain & Bar - SynthPlus - 1L**

Do you question which lubricant is suitable for which cutting attachment, climate zone or type of wood? No need to puzzle over the answers with semi-synthetic STIHL chain lubricant. Our high-performance lubricant is extremely suitable for all moving saw chains. Well protected. STIHL chain lubricant effectively protects saw chains from wear. Thanks to its high temperature resistance, cutting attachments are optimally protected even from short-duration maximum thermal loads. Smoking is inhibited. Keeps on flowing. Even at temperatures down to -20° C, STIHL chain lubricant retains its outstanding flow properties. Selected additives prevent resinification of the cutting attachment and other treated parts. And you can start using the saw straight away, even after an extended idle period.

**\$12.00**

**Contact Us for Price and Availability**

---



#### **File Guide - Magnetic Angle Plate**

Resources for filing chain. Two holding magnets, which are mounted on the rail. When sharpening the chain of the lines (30 ° / 35 °) to help the sharpening grid in the uniform and proper alignment of the file.

**\$18.00**

**Contact Us for Price and Availability**

---



#### **Oil - 2 Stroke - HP Ultra - 100mL**

Fully synthetic oil with exceptional lubrication properties. Burns with extremely low residue due to ash-free additive. Suitable for continuous use under the most demanding engine conditions. Performance class: JASO-FB, ISO-L-EGB. Fuel/oil ratio 1:50.

**\$5.00**

**Contact Us for Price and Availability**

---



#### **Oil - 2 Stroke - HP - 100mL**

STIHL 2 stroke Lube is a specially developed lubricant for air-cooled two stroke engines. It can be mixed with leaded or unleaded petrol. The formulation utilises a mixed additive system to ensure a minimal ash deposit formation. STIHL 2 Stroke Lube provides the following performance benefits: It contains diluent; mixes easily with fuel; controls corrosion excellently; has a minimal ring wear and piston scuffing; cleans burning, assisting in

maintaining cleaner combustion chambers, ports and mufflers.

**\$4.00**

**Contact Us for Price and Availability**

---



**Oil - Chain & Bar - BioPlus - 1L**

Particularly eco-friendly with outstanding lubrication and adhesive properties. STIHL BioPlus is derived from plants and completely decomposes in the ground within a short space of time (tested according to OECD 301 B). It has been awarded the German 'Blue Angel' ecology mark and the European Eco-Label.

**\$12.00**

**Contact Us for Price and Availability**

---



**Multispray - 400ml**

Multi function spray that cleans a number of tools and leaves a protective film that does not harden on the surface and thereby protects against corrosion. Rotating parts are lubricated. An essential all-rounder for every workshop. 400ml spray can.

**\$18.00**

**Contact Us for Price and Availability**

---



**VarioClean - 500ml**

Water based, alkaline detergent specifically for dissolving and removing organic oil residues and for cleaning air filters and housings. The detergent is biodegradable. Avoid contact with the eyes and keep out of reach of children.

**\$20.00**

**Contact Us for Price and Availability**

---



**Grease - Super Lube - 40g - FS/BT45/MM55/FH/HL**

For the gear systems of all STIHL brushcutters and clearing saws. Prices starting from \$12.25.

**\$13.00**

**Contact Us for Price and Availability**

---



#### **Oil - Chain & Bar - Heavy Duty Plus - 1L**

For ultimate protection in harsh conditions, from home use to the most intense forestry applications. Use with chainsaws, chains, forestry equipment, timber processing, saws, wire ropes and logging.

**\$22.00**

**Contact Us for Price and Availability**

---



#### **Multi Tool - 16-19mm**

Practical, multifunctional quality tool in a sturdy plastic case with both a 3.5 mm (for carburetor adjustments and cleaning grooves) and 7.0 mm slotted screwdriver. Torx blade TX27 and 19-13 and 19-16 spark plug wrenches. Includes a nylon bag and belt loop.

**\$70.00**

**Contact Us for Price and Availability**

---



#### **File Kit - 1/4 3/8P**

The complete Kit for saw chain maintenance.

**\$49.00**

**Contact Us for Price and Availability**

---



#### **File Kit - 1/4P**

The complete Kit for saw chain maintenance.

**\$49.00**

**Contact Us for Price and Availability**

---



#### **Protective Chaps - Chainsaw - Function - 90cm**

For occasional chainsaw applications. Anthracite and high visibility orange with denim look, 65% polyester, 35% cotton, elastic strap for enhanced comfort, light and breathable, Y-threading of closures for fast fitting and removal, reflective STIHL logo on right, extended cut protection area, EN 381, protection class 1 ( $\approx 20$  m/s).

**\$180.00**

**Contact Us for Price and Availability**



**Grease - Multi-lube - 40g - HS**

For lubricating the gear systems of all STIHL hedge trimmers and electric chain saws. Tube of 40g and 80g. Prices starting from \$12.25.

**\$15.00**

**Contact Us for Price and Availability**

---



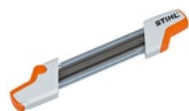
**Guide Bar Dresser**

Tool for removing burrs from the guide bar. Ergonomically shaped plastic holder with flat file made of hardened tool steel.

**\$59.00**

**Contact Us for Price and Availability**

---



**File System - 2 in 1 - 3/8LP - 4mm 5/32**

This practical file holder includes round and flat files to ensure an easy change of files.

**\$65.00**

**Contact Us for Price and Availability**

---



**STIHL Moisture Meter**

The STIHL moisture meter is lightweight and easily fits in your pocket. It has an easy to read screen with a wristband for safe holding. A simple on-off button and a removable sensor cover.

**\$34.95**

**Contact Us for Price and Availability**

---



**Guide Bar - Rollomatic - 3/8" .050" - 40CM/146" - 9Z**

High-quality standard with excellent cutting performance with low kickback. Main applications: Ideal for all-round use in agriculture, the small timber harvest and pruning in forestry on saws up to 3.5 kW. Rail body: Three-welded metal plates. The middle is cut out over a large area. This high stability at very favorable weight. Saw chain runs over exchangeable, robust sprocket mounted with 9 teeth, which must not be lubricated. Extremely robust Stern storage with 4 rivets.

**\$85.00**

Contact Us for Price and Availability